



BlackBerry AtHoc



BlackBerry AtHoc Networked Crisis Communication
Industrial Strobe Beacon
Installation and Con-
figuration Guide

Release 7.6, September 2018

Copyright © 2015–2018 BlackBerry Limited. All Rights Reserved.

This document may not be copied, disclosed, transferred, or modified without the prior written consent of BlackBerry Limited. While all content is believed to be correct at the time of publication, it is provided as general purpose information. The content is subject to change without notice and is provided “as is” and with no expressed or implied warranties whatsoever, including, but not limited to, a warranty for accuracy made by BlackBerry Limited. The software described in this document is provided under written license only, contains valuable trade secrets and proprietary information, and is protected by the copyright laws of the United States and other countries. Unauthorized use of software or its documentation can result in civil damages and criminal prosecution.

Trademarks

Trademarks, including but not limited to ATHOC, EMBLEM Design, ATHOC & Design and the PURPLE GLOBE Design are the trademarks or registered trademarks of BlackBerry Limited, its subsidiaries and/or affiliates, used under license, and the exclusive rights to such trademarks are expressly reserved. All other trademarks are the property of their respective owners. Users are not permitted to use these marks without the prior written consent of AtHoc or such third party which may own the mark.

This product includes software developed by Microsoft (<http://www.microsoft.com>).

This product includes software developed by Intel (<http://www.intel.com>).

This product includes software developed by BroadCom (<http://www.broadcom.com>).

All other trademarks mentioned in this document are the property of their respective owners.

Patents

This product includes technology protected under [patents and pending patents](#).

BlackBerry Solution License Agreement

<https://us.blackberry.com/legal/blackberry-solution-license-agreement>

Contact Information

BlackBerry AtHoc

2988 Campus Drive, Suite 100

San Mateo, CA 94403

Tel: 1-650-685-3000

Email: athocsupport@blackberry.com

Web: <http://www.athoc.com>

Contents

- CHAPTER 1: PRODUCT REQUIREMENTS** **1**
 - Hardware and firmware requirements 1
 - Software requirements 1

- CHAPTER 2: REGISTER THE INDUSTRIAL STROBE BEACON DELIVERY GATEWAY ON BLACKBERRY ATHOC** **2**
 - Enable the device on the server 2
 - Configure the delivery gateway 3
 - Configure the device 4
 - Create the Strobe mass device endpoints 5

- CHAPTER 3: IIM SETUP** **7**
 - Set up filters in the IIM 7
 - Update the indexURL 8

- CHAPTER 4: CONTACT BLACKBERRY ATHOC TECHNICAL SUPPORT** **9**

Chapter 1: Product requirements

The following section describes the hardware and software requirements to configure strobe devices.

Hardware and firmware requirements

Strobe Light has the following minimum hardware and firmware requirements:

- For each connected strobe light, you need to have the following items:
 - An available RS232 computer port
 - A line level input into an auxiliary audio input module
- You need at least one strobe beacon (two units for redundancy) in each isolated control and audio network, with the listed requirements.

Software requirements

Strobe Light has the following minimum software requirements:

- IP Integration Module Agent: Version 1.1.0
- IIM Capnode with capnode_obf.jar build 46 or later

Chapter 2: Register the Industrial Strobe Beacon delivery gateway on BlackBerry AtHoc

This section describes the steps to configure the strobe light on the BlackBerry AtHoc management system. The delivery gateway for strobe lights is Industrial Strobe Beacon.

Enable the device on the server	2
Configure the delivery gateway	3
Configure the device	4
Create the Strobe mass device endpoints	5

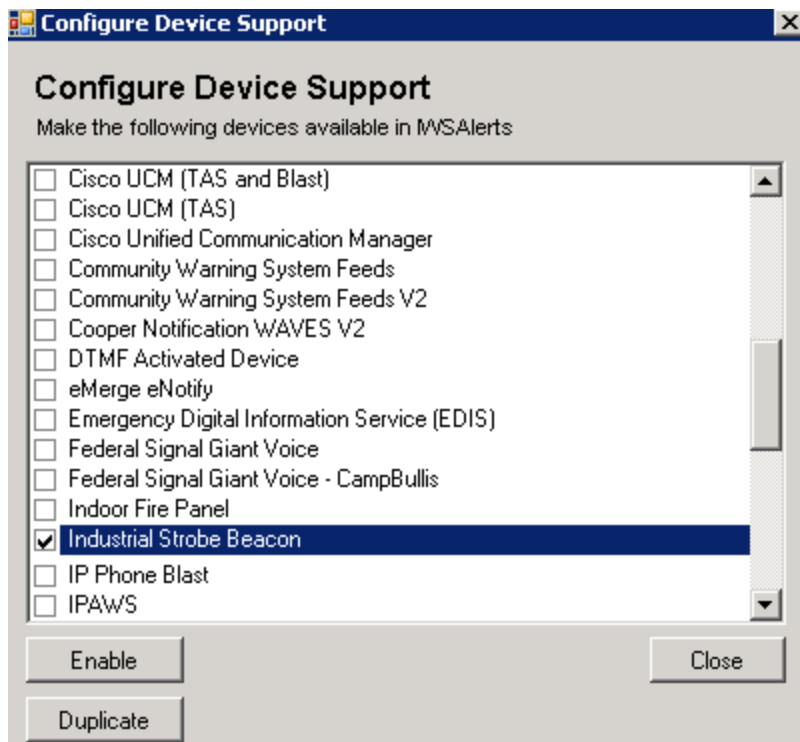
Enable the device on the server

Before you start configuring the devices for BlackBerry AtHoc, you must enable the device on the BlackBerry AtHoc server. When you enable the device, it appears in the list of gateways on the Settings screen and in the list of devices in the Devices section.

To enable the Industrial Strobe Beacon device, perform the following steps:

1. Open Internet Explorer and launch the BlackBerry AtHoc server.
2. Navigate to the following folder: `../Program Files (x86)/AtHocENS/Server-Objects/Tools` and run the `AtHoc.Applications.Tools.InstallPackage` file.

In the Configure Device Support screen, select the Industrial Strobe Beacon check box.

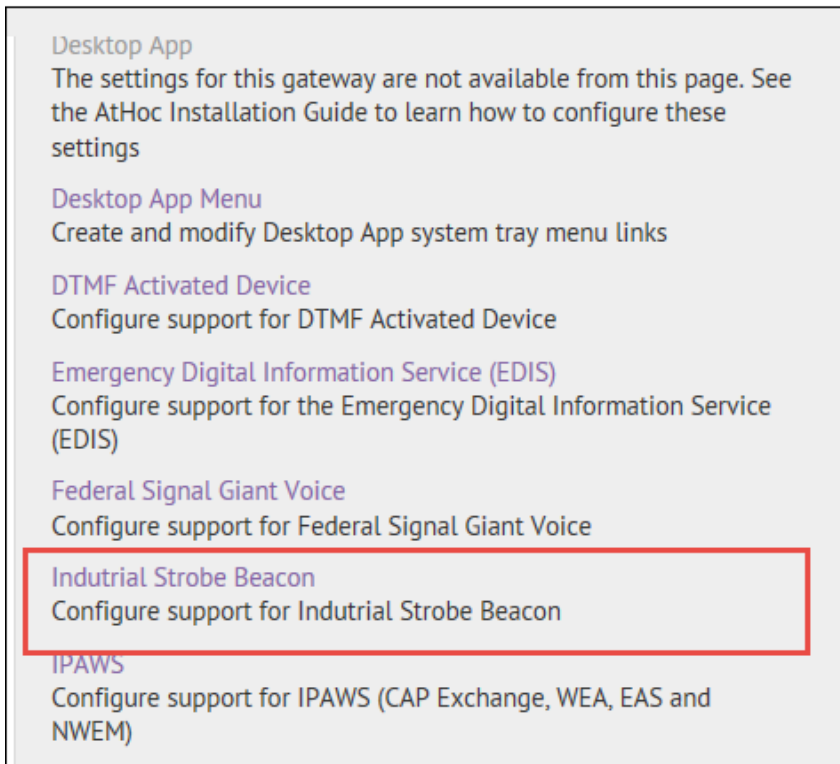


3. Click **Enable**.
4. Click **Close**.

Configure the delivery gateway

To configure the gateway, perform the following steps:

1. Log in to BlackBerry AtHoc management system as an administrator.
2. In the navigation bar, click the  (Settings) icon.
3. In the Devices section, select **Industrial Strobe Beacon**.



Desktop App
The settings for this gateway are not available from this page. See the AtHoc Installation Guide to learn how to configure these settings

Desktop App Menu
Create and modify Desktop App system tray menu links

DTMF Activated Device
Configure support for DTMF Activated Device

Emergency Digital Information Service (EDIS)
Configure support for the Emergency Digital Information Service (EDIS)

Federal Signal Giant Voice
Configure support for Federal Signal Giant Voice

Industrial Strobe Beacon
Configure support for Industrial Strobe Beacon

IPAWS
Configure support for IPAWS (CAP Exchange, WEA, EAS and NWEM)

4. Click **Copy Default Settings**.

Industrial Strobe Beacon

Configure support for Industrial Strobe Beacon

[Copy default settings](#)

General Settings

Convert Line Breaks: Yes No
Replace line break characters with spaces in content delivered to the IIM

Expected Polling Rate:

Output Format: Standard
 Cooper WAVES
 CentrAlert

CAP Parameter Defaults

Sender:
The identifier of the sender of the alert message

CAP URLs
Use following URLs within IIM configuration and for debugging purposes. Replace placeholders with appropriate values before using.

CAP Index URL:
IIMs poll this URL to retrieve all Live Alerts from system.

CAP Message URL:
IIMs poll this URL to retrieve details for a specific Alert.


CAP Event Logs Submission
URL: IIMs post event logs from Giant Voice systems to this system using this URL.

[<< Back](#) Save [Reset](#)

5. Click **Save**.

Configure the device

Perform the following steps to configure the strobe device to receive alerts from BlackBerry AtHoc:


1. In the navigation bar, click the  (Settings) icon.
2. In the Devices section, click **Devices**.
3. Click **Industrial Strobe Beacon**.
4. Click **Edit**.
5. In the Details section, fill in the fields as shown in the following image.

6. In the Delivery Gateway section, click on the **Add a Delivery Gateway** list and select **Industrial Strobe Beacon**.
7. Click the **Configure** link to open the text entry field and verify the XML with the below XML template.

8. Click **Save**.
9. To make the strobe device available for alert targeting, click **Enable**.
10. To return to the Settings screen, click **Return to Device Manager**.

Create the Strobe mass device endpoints

To create Strobe mass device endpoints for each device, perform the following steps:

1. In the navigation bar, click the  (Settings) icon.
2. In the Devices section, click **Mass Device Endpoints**. The Mass Device Endpoints screen opens.
3. Click **New**, and then select the Strobe device.
4. In the General section, enter an Endpoint Name. Enter a value between 4 and 80 characters long. The following special characters are not allowed: (' ^ = < >)
5. In the General section, enter a Common Name. Enter a value between 4 and 80 characters long. The following special characters are not allowed: (` ! \$ % ^ () = { } , ; : ? " < > | [space])
6. In the Configuration section, enter an address for the Strobe device. Use a unique value for the second number in the address for each endpoint. For example, P,0,1 and P1,1.

Syntax: P<*n*>,1

Where *n* is the unique number for the pole. This number will be added to the address in the IIM filter.

7. Click **Save**.

Chapter 3: IIM setup

The following sections describe how to set up IIM. Ensure that the version of IIM that you are running is at least build 46 of capnode_obf (check the value in the `build.number` file).

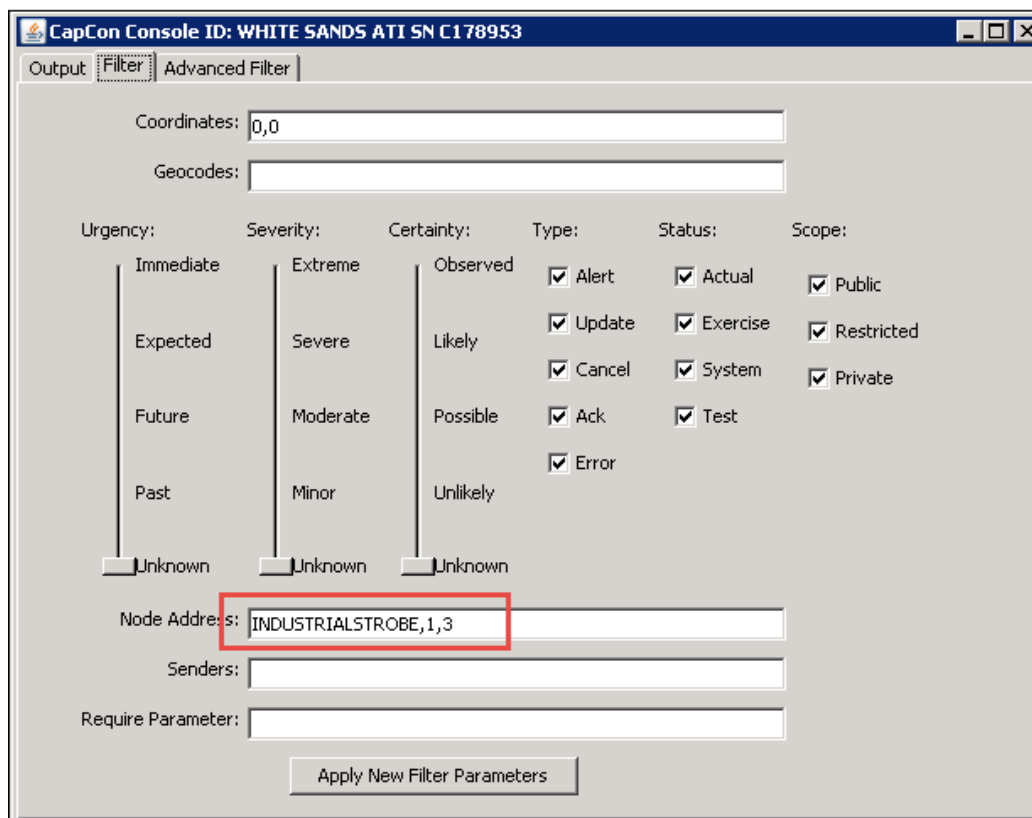
Set up filters in the IIM	7
Update the indexURL	8

Set up filters in the IIM

1. Connect to the IIM strobe light.
2. Open the CapCon Console.
3. Click on the **Filter** tab.
4. In the Node Address field, enter the end point value for the device.

Syntax: INDUSTRIAL_STROBE_1_<n>

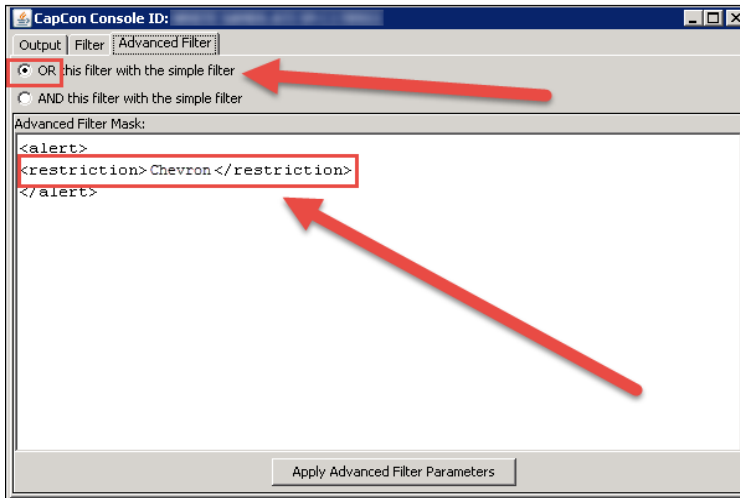
Where *n* = the *second* number in the mass device end point address. See [Create the Strobe mass device endpoints](#).



The screenshot shows the CapCon Console window with the title "CapCon Console ID: WHITE SANDS ATI SN C178953". The "Filter" tab is selected, and the "Advanced Filter" sub-tab is active. The interface includes several input fields and a grid of filter options:

- Coordinates:** 0,0
- Geocodes:** (empty)
- Urgency:** Immediate, Expected, Future, Past, Unknown
- Severity:** Extreme, Severe, Moderate, Minor, Unknown
- Certainty:** Observed, Likely, Possible, Unlikely, Unknown
- Type:** Alert, Update, Cancel, Ack, Error
- Status:** Actual, Exercise, System, Test
- Scope:** Public, Restricted, Private
- Node Address:** INDUSTRIALSTROBE,1,3 (highlighted with a red box)
- Senders:** (empty)
- Require Parameter:** (empty)
- Apply New Filter Parameters** button

5. For the CAP server, click the **Advanced Filter** tab.
6. Select the **OR this filter with the simple filter** option.
7. Add the CAP station name in the <restriction> tags.



8. Click **Apply Advanced Filter Parameters** to save.

Update the indexURL

For the indexURL, you should provide both the BlackBerry AtHoc and the CapServer links.

For Cap Server, you must do a special configuration. IIM uses a build that automatically appends `?ast=<MACID>` to indexURL, which can cause bad strings to show up in the CapCon report list.

Append `&ast=1234` after the normal string. This change prevents the IIM from appending the `?ast`. The change also allows the Cap Server to ignore it. For example, see the bold:

```
indexURL=https\://integration6.athoc.com/Syndication/CAP_
INDUSTRIALSTROBE/2061062/capindex/;https\://cws-
capqa.alertingsolutions.com/capserver/Poll?id\=CapCon_<account>_<mem-
ber>&ast=1234
```

Chapter 4: Contact BlackBerry AtHoc technical support

If you encounter any problems or have questions about the BlackBerry AtHoc software, contact BlackBerry AtHoc Technical Support using any of the following methods:

- **Web Site Form:** <https://support.athoc.com/customer-support-portal/-login.html>
- **Telephone:** (888) GO-ATHOC (462-8462)
- **Email:** athocsupport@blackberry.com

Tip: The Web-based support form is the primary method for contacting BlackBerry AtHoc technical support.